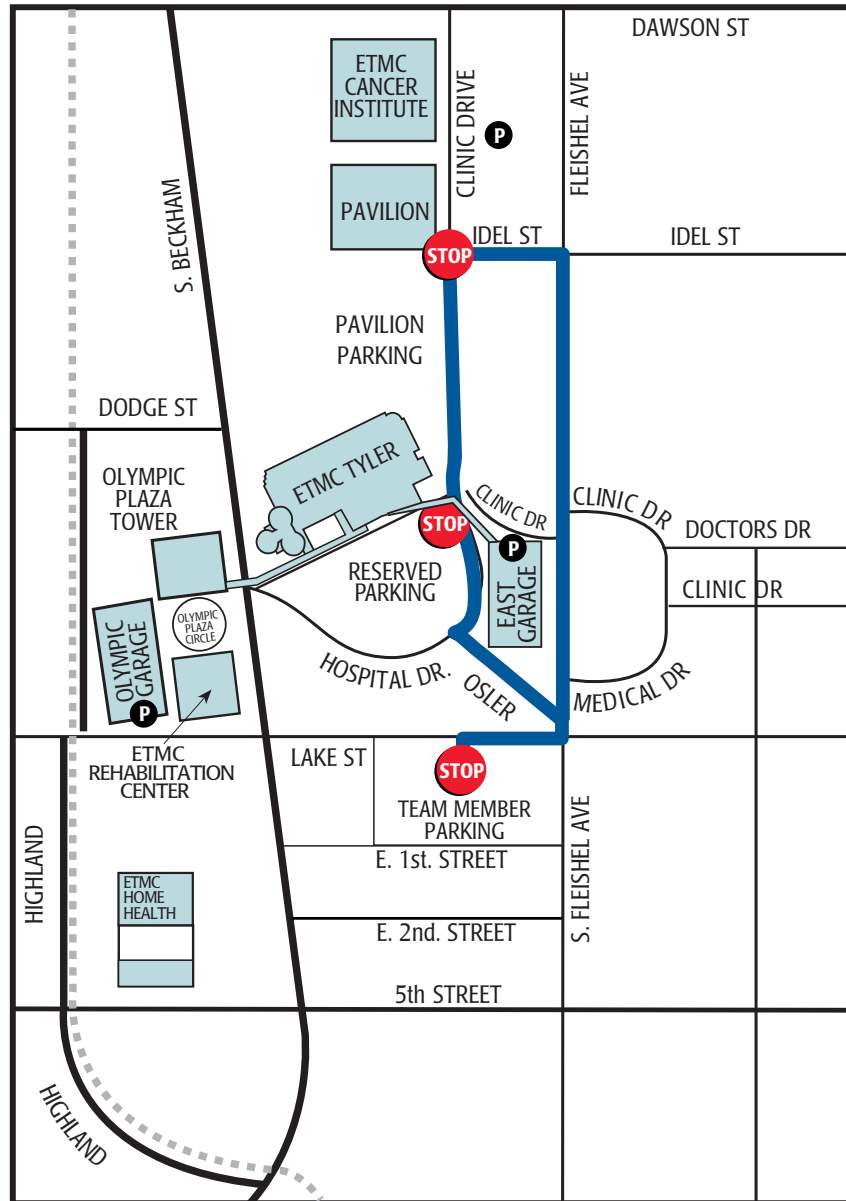


ETMC Shuttle Bus Map



East Campus Route (blue)
Operates 24-hours-a-day

- P** Public Parking
- Railroad Tracks



East Texas Medical Center
Regional Healthcare System

MEMORANDUM

TO: ETMC Team members

FROM: Bob Hampton
VP, Property Services ETMCRHS

DATE: October 29, 2008

SUBJECT: Parking Changes at ETMC Tyler as
Construction of Garage Begins

The construction of a new parking facility for ETMC Tyler will affect where some team members park. Beginning Saturday, November 22, parking will no longer be allowed on Hospital and Osler Drive on the side of the street next to the construction zone, while no parking will be allowed anywhere on Clinic Drive.

Over the next 14 months, ETMC will build a parking garage behind the hospital with an estimated 600 new parking spaces.

ETMC will add a green route shuttle bus from 6 a.m. – 8 p.m. to pick up team members from the east end of the parking lot at the Fifth Street clinic. Bus stops will include the ETMC Pavilion and main hospital.

The red route shuttle bus runs from 6 a.m. – 6:30 p.m. and picks up team members in the Big Lots parking lot. This bus stops at the Olympic Plaza Tower.

The blue route shuttle bus will continue to pick-up team members in the Lake Street lot and make stops at the Pavilion, ETMC Cancer Institute and main hospital. This shuttle runs 7 days a week, 24 hours a day. If you need to get to your car in the green or red route lots after those shuttle buses have stopped running, they should catch the blue bus and the driver will make a special stop.

Emergency call boxes are located at all parking lots and will connect you directly to security if you need assistance. Buses run every 10 – 15 minutes.

Cars parking in the construction zone area could receive tickets from the Tyler Police Department and may also be towed at the owner's expense. The hospital loading zone areas will also be enforced 24 hours a day.

We regret any inconvenience the construction will cause you and ask for your support as we try to improve the parking around the hospital.

The parking garage is expected to be completed at the end of 2009.

